




# Avogue.1<sup>TM</sup>

AVANT-GARDE  
RESIDENCES





Some make waves. Some make a splash.  
And then, there's the Tsunami.  
A twist in the ocean that rewrites  
entire landscapes, forever.  
Would you rather break new ground,  
or cause a quake that shatters all?  
Would you rather escape the ordinary,  
or rewrite the very way destiny works?

*Would you  
rather break norms,  
or rethink reality  
itself?*

Behold, the showstopper.  
The shift of the ages.  
The legacy that is born  
to be your very signature.

There comes a moment  
when the untamed become  
the prized ones, and the  
unapologetic become  
the worshipped.

*NOW IS IT.*  
**ENVIOIE**  
*IS HERE.*

Time vanishes. Space goes extinct.  
The ordinary ends. So does the extraordinary.  
Change. Transformation. Revolution.  
All become mere words.  
In front of a glory and a magnificence  
that lies far, far beyond them.

*Will  
you  
leap?*



# *Envogue Rundown*

## ***Regulars***

The Inkling  
Inside the creator's mind

## ***Being En-vogue***

What lies behind the  
feisty new statement homes

## ***Sassy Junction***

Picking the perfect  
glamour lane

## ***Frisky Ensemble***

Designing the sassiest lifestyle



*COVER STORY*

# EN VOGUE<sup>TM</sup> UEI

Pioneering  
the unusually  
fashionable  
homes

AVANT-GARDE  
RESIDENCES





*Sumit Tayal*  
*Managing Director, Tayal Corp.*

“

*Doing things  
differently isn't  
always easy,  
but it is indeed  
always worth it.*

”

## *The Believer who is here to Deliver*

'Innovation' and 'real estate' are two terms that seldom go together. However, Sumit Tayal of Tayal Corp. sees things differently. Aiming to deliver homes that offer a seamless blend of modernity and usability, Sumit is determined to change the ways in which realty is perceived. And so, he is all set to change the very ways in which properties are constructed and delivered. For within this approach, he aims to elevate lifestyles in ways that transform and upgrade the very structures of modern living no less. And while he has indeed made a difference within the world of realty with some well-known projects in the past, Envogue is his way of rethinking realty from scratch.

“When people tell you that a particular goal is difficult to achieve, that's exactly the thing that you should be considering doing first,” says Sumit. Explaining things further, he adds, “You see, every new innovation or invention was initially considered unfeasible. Until of course, it wasn't. So when people tell me that my vision is a little "unconventional" or that a certain idea simply wouldn't "work", I usually take up the challenge to do exactly that. Because if you are truly ready to give your 100%, there's a lot that you can achieve without as much as breaking a sweat.”





*Sachin  
Soni*

*Principal Architect,  
Space Craft Associates*

*Amar  
Gulwade*

*Director, Square One  
Communications*

*Sumit  
Tayal*

*Managing Director,  
Tayal Corp.*

# *The Inkling*

*From the Creators*

A usual morning of sipping coffee and flipping through newspapers flooded with (similar looking) realty projects, triggered a random wondering somewhere. "What if real estate developers were to actually craft something as different as their claims purported it to be?"

The aforementioned question opened up a big box of ideas in Amar Gulwade's mind. Questions were raised; dots connected. And then, an idea was born. Rogue, outrageous, and unapologetic fashion splashed liberally across equally unconventional homes. A truly bold idea that required an equally bold execution to match indeed. A long discussion with real estate developer Sumit Tayal later, the idea had found its match (and its true home too!) Bold in his stance and a risk-taker by his very attitude, Sumit Tayal knew exactly what was needed to get this particular idea rolling.

One discussion led to another, and many more followed; all leading to a rush of exceptional ideas and innovations. But Sumit Tayal had a far greater vision for things here, as he absolutely did not want to stop at crafting just one pathbreaking project. And thus,

Envogue was reborn as a brand. Practical ideas by Sumit Tayal blended together with the design insights of architect Sachin Soni and the creative prowess of Amar Gulwade, to bring to life the most outrageous real estate brand that the very city of Pune has ever witnessed.

As the principal architect, tasked with bringing brand Envogue to life, Sachin Soni embarked upon an architectural journey, nay, adventure, unlike anything that he had ever embarked upon. From crafting unique and different moodboards and colour palettes to suit each specific amenity to creating spaces that were not only unapologetically stylish, but also practical and usable beyond one's wildest imaginings; it was Sachin's relentless determination and commitment to the cause that helped transform brand Envogue from an idea into a masterpiece.

The time for bold fashion statements, sassy colour palettes and outlandish designs is here.

***The Envogue era has begun.***



What makes Envogue a true enigma is the uncertainty of its form. It not only promises a stance that is unapologetic, outrageous and feisty; but also promises to be fashionable whilst owning it. It brings with it styles that make statements that are not only larger than life, but also distinctly sassy. It is sure to evoke within you a desire to flaunt your very own, deeply hidden style. A style that breaks the ordinary patterns, and all else that fits the conventional.

Every space at Envogue is crafted to be a high-end fashion statement accessorised by bold features and details. And every last detail here challenges the traditional norms and status quo of the real estate industry. It celebrates individuality and creativity, and will always have bold and daring designs that make for a truly powerful expression.

BEI  
NG

EN  
VOG  
UE





# Cover Story

# ENVOGUE

## Avant-garde Residences

Living space design is a whole lot like fashion; for it allows one to express emotions, cultures, trends and styles pertinent to a particular time and era. And those who know this, know exactly what to expect from the most unconventionally high-end fashion inspired homes in town, Envogue1. Make way for meandering lines, sweeping curves, organic shapes and rebellious colour palettes. For the Avant-garde Residences at Envogue1 are all about living that swanky, sassy and unapologetic lifestyle. Be it randomly blending dynamic and placid spaces, mixing up patterns, or experimenting with colours; Envogue1 is where inconsistency creates and delivers audacious yet extraordinary experiences. Experience the sheer spontaneity and style brought forth by bespoke form-based architecture that easily breaks the norms of how residences have been designed and delivered for decades. Just a single glance at it is more than enough to show you what pure, raw, architectural beauty is truly all about.

Everyone who interacts with these spaces is in for some remarkably luxurious experiences, and will ultimately experience pleasant changeovers from the mundane residential spaces that they had previously occupied. Envogue1 is not only here to make some bold and outrageous lifestyle statements, but also there to showcase the most prominent examples of what true luxury ought to look like.

***The era of apologetic  
living is no longer.***







Artistic Impression



# Envogue 1<sup>TM</sup>

## AVANT-GARDE RESIDENCES

Bespoke, customizable homes for you to define with your free will, or roughly sketched 3 & 4 BHKs for all of you who need a little nudge to express yourselves; Envogue1 has it all. Add to it some audaciously designed common spaces to mesmerise and inspire the punk side of you, and what you have is an unapologetic abode like none other that has ever come before.





Artistic Impression

# EN VOGUE<sup>TM</sup> UE1



*Don't  
just  
look,  
locate.*







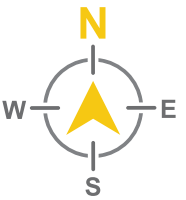
# Master Layout

- 1. Designer West Entry Gate
- 2. Designer South Entry Gate
- 3. Event Lawn
- 4. Clubhouse
  - Multipurpose Hall
  - Mini Home Theatre
  - Terrace Lounge
- 5. Half Basketball Court
- 6. Badminton Court

- 7. Private Garden
- 8. Leisure Seating & Walkway
- 9. K2 Wing Amenity
  - Crèche
  - Indoor Games Lounge
  - Reading Space

- Second Floor
- Gymnasium
  - Spa & Salon
  - Co-working Space
- 10. Infinity Pool
  - 11. Jacuzzi
  - 12. Deck Area
  - 13. Kids' Pool

- 14. Sunken Seating
- 15. Leisure Seating & Walkway
- 16. Gazebo with Elderly Seating
- 17. Toddlers' Play Area
- 18. Hammock Garden
- 19. Childrens' Play Area





# *Sassy Function*

A perfectly edgy ramp for those en-vogue would mean being surrounded by the eternally-lit nightlife of Pune that connects them to everything that they desire, and truly deserve.



Designer West Entry Gate

Artistic Impression

For this is where your enthralling story begins, as you step forth into uncharted dimensions of effulgent beauty and splendor for the first time ever. Where every page you turn is an awe-inspiring escape, and every step you take leads into marvellously picturesque escapades. Where the unapologetic becomes a way of life, and stays so, forever.





*To beat away  
the blues,  
try some*

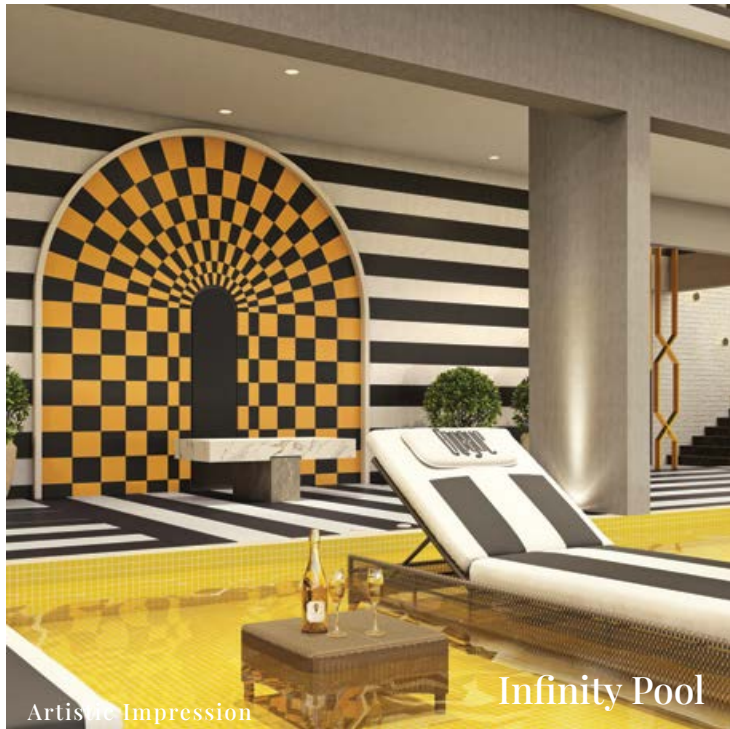
YE  
LL  
OW





Infinity Pool

Artistic Impression



Artistic Impression

Infinity Pool

Feel the rush of its sun-kissed waves, as you make a splash that makes the very solar system jealous. Uplifted spirits, bright moods, and a radiant glow; all come to those who soak up the endless beauty of this strikingly haute swimmers' paradise.



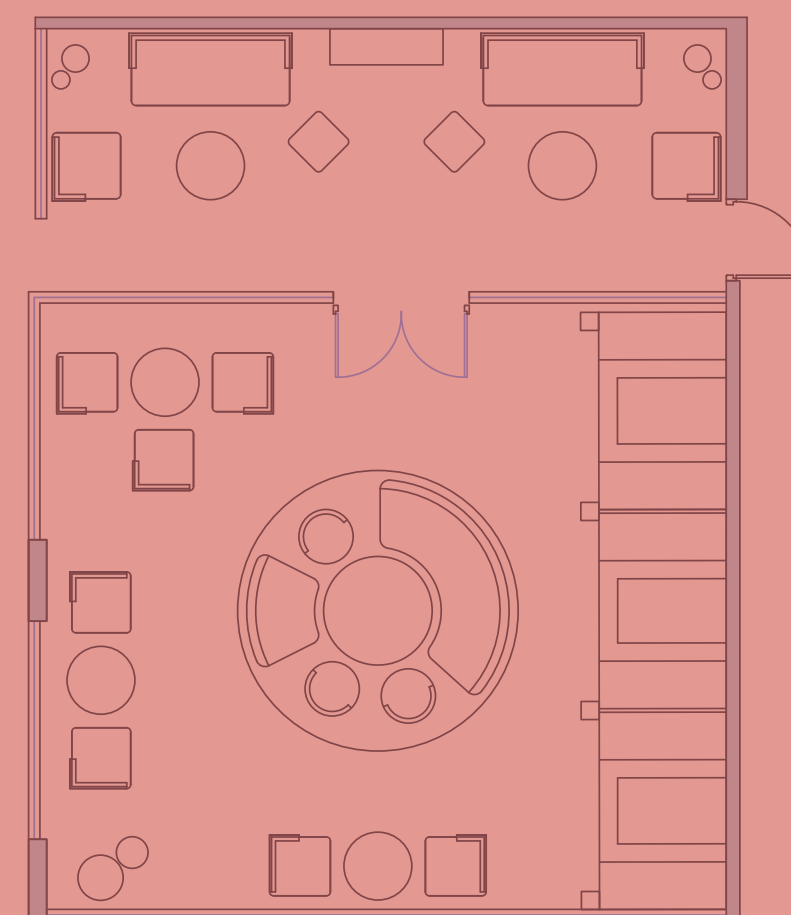
Co-working Space

HAVE

*Neither  
let time  
limit you,  
nor space.*

Artistic Impression

For this is your exclusive little work island of unmistakable beauty and elegance. A place where all of your To-Do Lists become your Too-Little-To-Do Lists, as every small task of yours turns into a fun and exciting adventure, unlike any other you've ever really known.





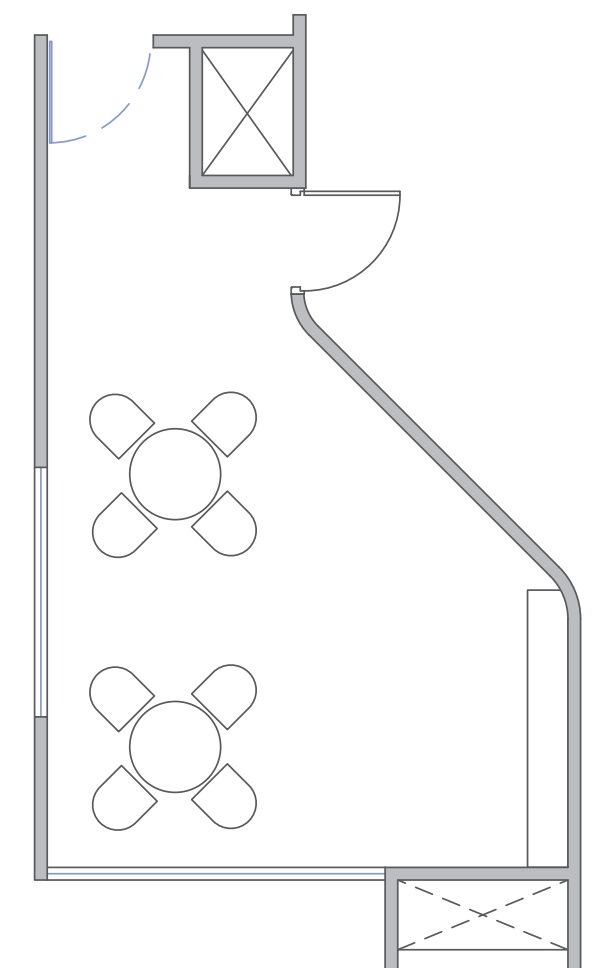
*The written word is a portal to dimensions unmanifest.*

And as pages upon pages of miraculous stories unfold before the unassuming reader, their very own inner storylines become weaved in, bound and rewritten along the way. For within this mesmerizing reading room, lie elegantly arranged doorways to adventures incomparable. Legends have described it as the whole new way to read the room.



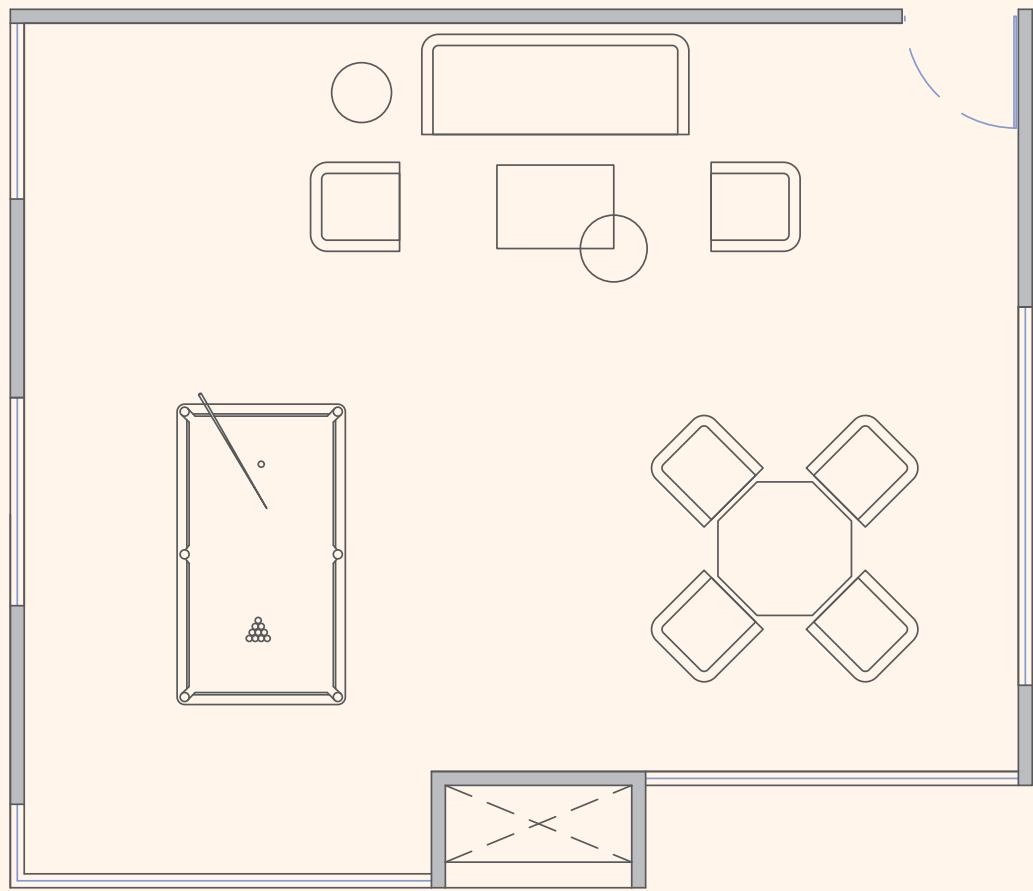
# IMAGINATION

Reading Area





*You are  
what you  
rendezvous  
with.*



And at your pivotal moment of reckoning, you will eternally be consumed by the game in ways that push, stretch, enamor, and electrify you in ways unimaginable. Take a cue from the Pool Table, go all in on Poker, and you will know what it means to truly settle scores, the thrilling way.

TRIUMPH





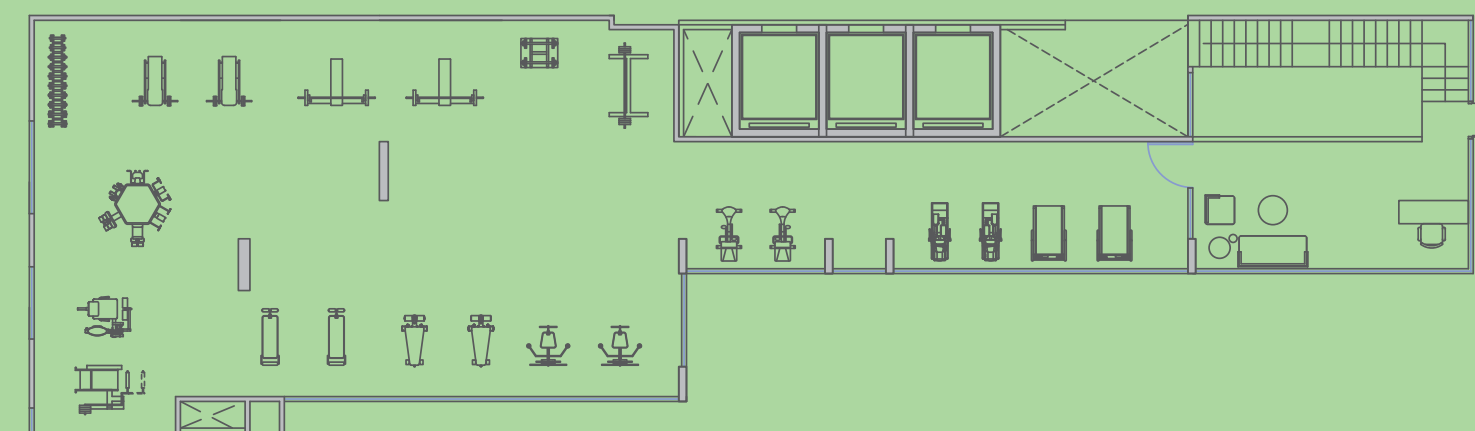
Gymnasium

Artistic Impression

# PHYSIQUES

*Activity  
alone  
activates.*

Here's a place for the sculptors of the physical form, where every body has a space to grow. This is where those who were never meant to fit in a mould walk in and mould themselves, all into living embodiments of pure perfection no less.





# EXCITE MENT

*True life  
begins at  
the very  
limits of  
fervour.*



Toddlers' Play Area with Gazebo

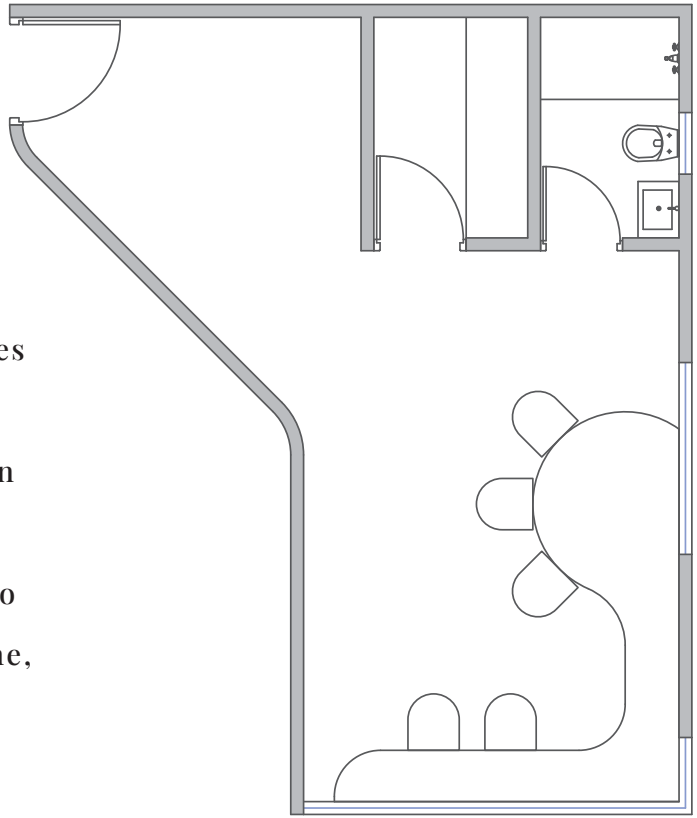
This is where boundless dynamism expresses itself in pace and prance, rhythm and dance. It is here within the magical and enticing Toddlers' Play Area that the action-packed stage of joie de vivre awakens to the never-ending play of life. For indeed is this a bustling exploration of spirited activities that finds its soothing climax, within the calming yet captivating Gazebo that sits right amidst its attractively zestful environs.





*Poise is the bridge  
between motion  
and stillness.*

*Catalysts  
drive  
creativity.*



This is a world where there are no corners. Where round edges and smooth contours propel the spirals of creative meanderings in myriad ways heretofore unexplored. Where an endless stream of immersive activities slows down the very flow of time itself. And, as the very hands of the clock begin to reverse their respective journeys within this marvelous crèche, the child becomes the father of man; albeit evolved.



As the mystical depths of silence consume you, life's many ephemeral wonders come alive all around you, all throughout you. Whether you choose to sit, stand, or stroll; there is a unique cadence to it here. So relax, breathe, and watch endless perspectives of life gift themselves to you; in silence, in rhythm, and in everything in-between.



*True  
fulfillment  
can only be  
intimate.*

Here's where you set the tracks ablaze and come up to speed with all of your wildest fitness goals. Keep pace with a world that's constantly on the move, but on your own time, and space, and at a pace that is destined to remain unmatched; for life.



HAR  
MONY



# ARRIVE



Drop-off Point

Artistic Impression

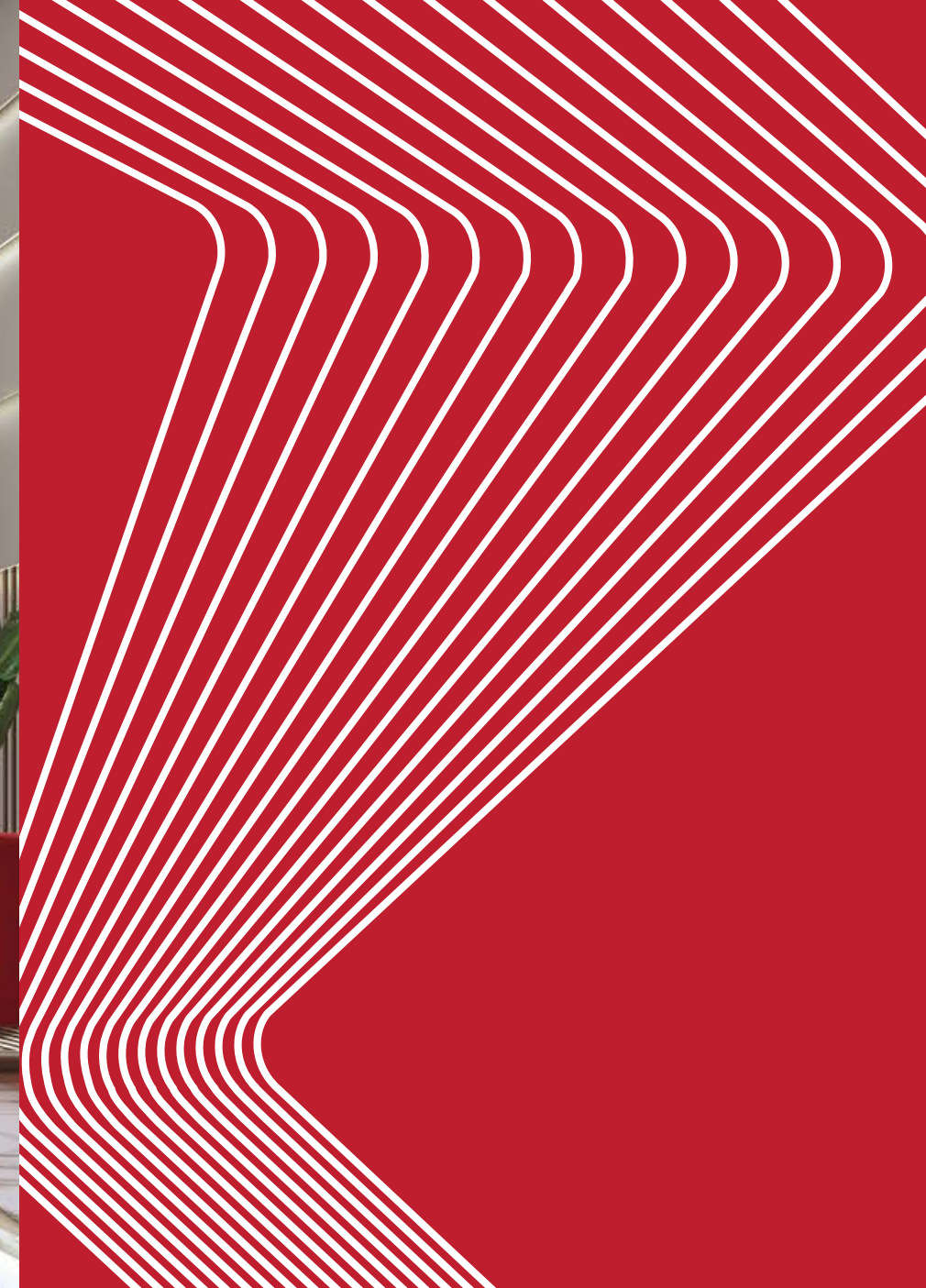
*Empty spaces  
are meant  
to be filled.*

And arrivals aren't meant to be forgotten. Within this spellbinding realm, are ample spaces to park both your cars and your chariots, and then some more. So come over and make a grand entrance, for that's the only thing you'll ever be able to make here.





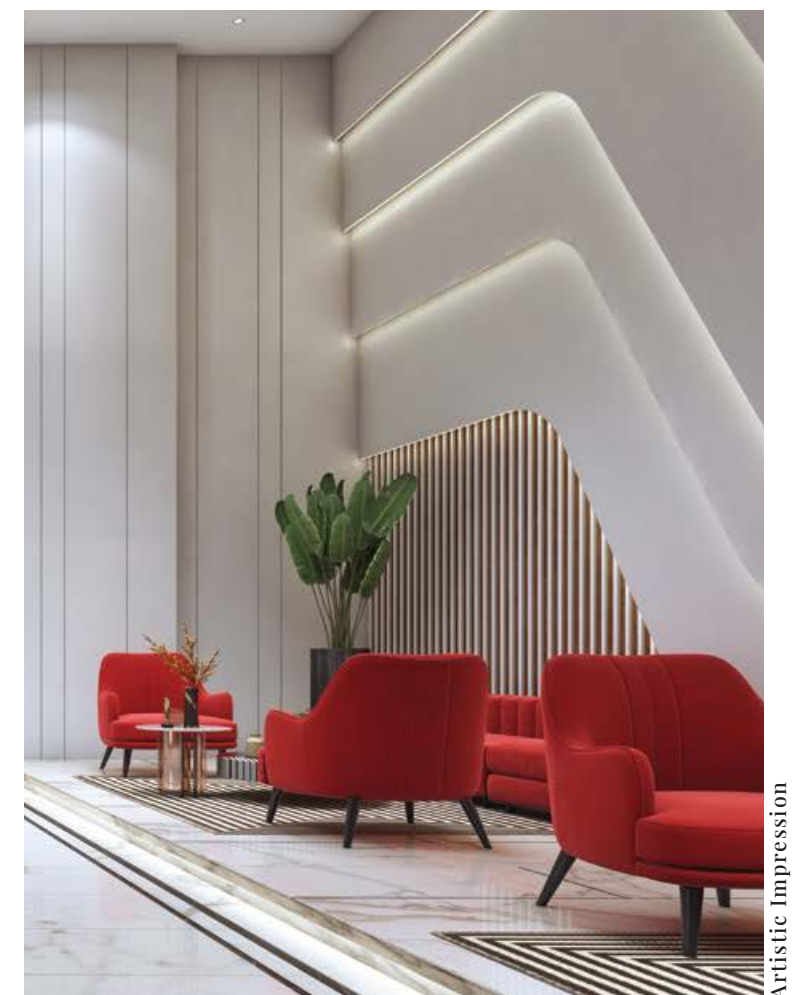
Grand Arrival Lobby



# COMMUNE

*The right way  
to multiply grey  
matter is to  
exchange it.*

Within every moment that you spend here lounging, lies an inexplicable longing. To stay here longer. To taste the décor further. To feel the never-ending exchanges of words, smiles, and insights, over and over and over. To breathe in the bliss, that only comes with good, nay, great company. To be, or to be here endlessly; that is the question. A question that you've already answered; as you very well know.

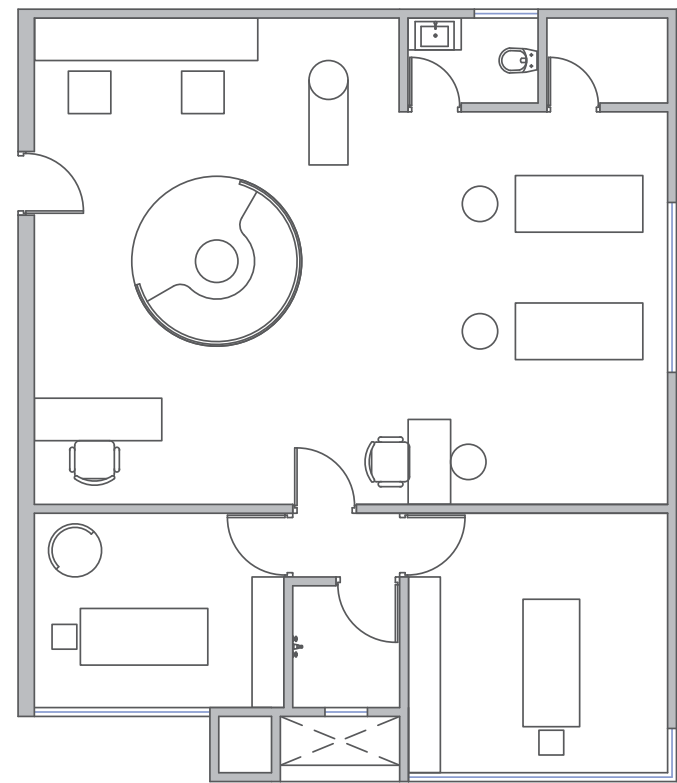


Artistic Impression





*The empire of  
composure  
belongs to the  
exalted ones.*



# REALIGNMENT



So let your inhibitions fall free, unbounded by form or gravity, as all pressure within you evaporates and settles into pure, absolute, timeless perfection. Here's where limitless bliss just happens, as incalculable joy and serenity envelop you in ways that are far, far beyond the modest fathomings of human conception. An experience beyond words.  
An experience beyond worlds. Dissolution.





*Solace  
is the stairway  
to inner  
perfection.*



Courtyard

Artistic Impression

# SE CL US ION

Be engulfed within silence and enchantment, as your very breath vanishes into waves upons waves of incalculable bliss. For within this courtyard is where man meets nature, at the very melting point of inner aliveness and eternal silence. This is where the green elements of life whisper sweet nothings into the yearning mind of man, bridging that which is known, with the great unknown far beyond.



# AMIE NIT IES



- Clubhouse
- Multipurpose Hall
- Mini Home Theatre
- Terrace Lounge
- Event Lawn
- Leisure Seating & Walkway
- Indoor Games Lounge
- Childrens' Play Area

- Toddlers' Play Area
- Hammock Garden
- Gazebo with Elderly Seating
- Deck Area
- Sunken Seating
- Infinity Pool
- Kids' Pool
- Co-working Space

- Gymnasium
- Spa & Salon
- Jacuzzi
- Reading Space
- Half Basketball Court
- Badminton Court
- Private Garden

- Crèche
- Designer Entrance Gate
- Grand Arrival Lobby
- Grand Entrance Plaza
- Generator Backup for  
Common Areas & Lifts



# SPECIFIC ATT IONS



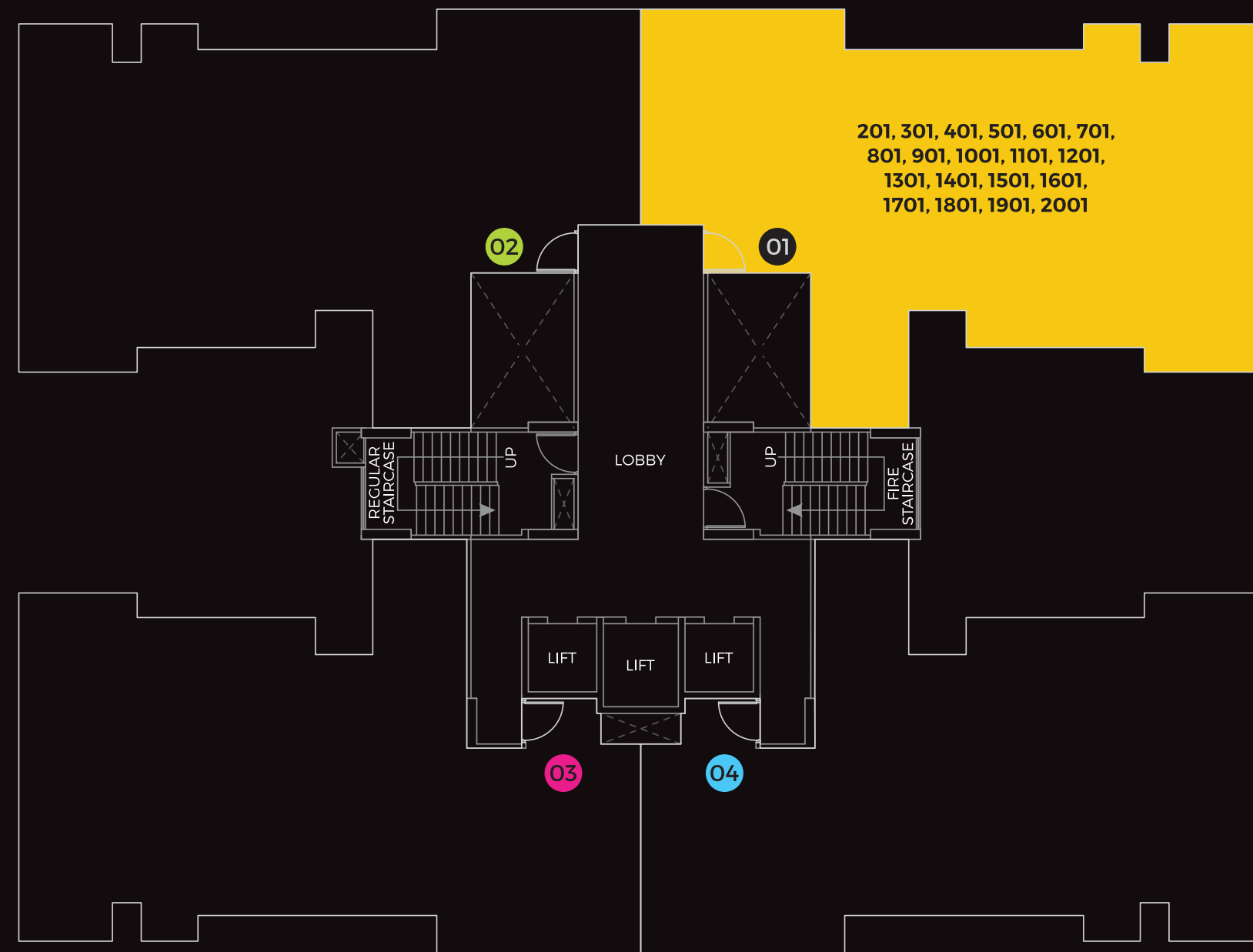
- External Texture Paint
- Gypsum Finish Internal Walls
- AAC Blocks Masonry
- Designer Vitrified Tiles in Living Room, Kitchen & Bedrooms
- Designer Tiles in Bathrooms
- Vitrified Flooring for Terrace

- Kitchen Platform with Sink
- Designer Dado Tiles in Kitchen
- Provision for Water Purifier
- Provision for Exhaust Fan in All Toilets & Kitchen
- CP & Sanitary Fittings of Premium Quality
- Solar Heated Water in All Bathrooms

- Laminated Flush Doors
- UPVC Windows with Mosquito Mesh
- Concealed Wiring
- Electrical Switches of Premium Quality
- Television Point in Living Room & Master Bedroom
- AC Point in Living Room & All Bedrooms with Data Connection

- Provision for Inverter Point
- Plastic Paint for Interior Walls
- Semi Acrylic Paint for External Walls
- Provision for Wi-Fi
- Video Door Phone (VDP)





**ENVUE I**<sup>TM</sup>  
Avant-garde Residences

*Master Plan*  
*Wing K-1* | *Typical*  
*Floor*



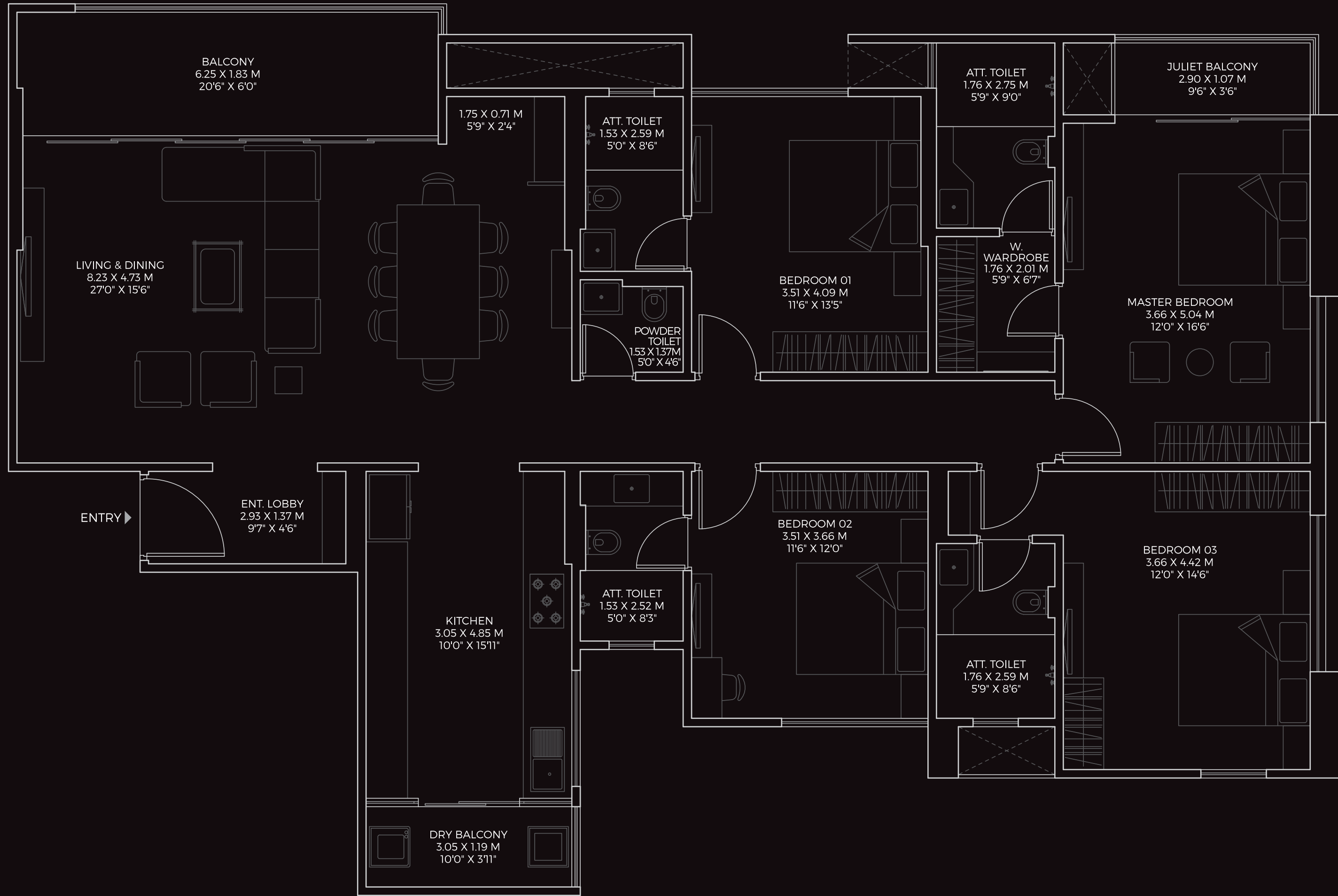
*Wing K-1*

---

*Typical Floor*

**SERIES 1**





**FLAT NO.**  
201, 301, 401, 501, 601, 701, 801, 901, 1001, 1101, 1201,  
1301, 1401, 1501, 1601, 1701, 1801, 1901, 2001

AREA STATEMENT						
TYPE	RERA CARPET AREA		RERA BALCONY AREA		TOTAL AREA	
	SQ. MT.	SQ. FT.	SQ. MT.	SQ. FT.	SQ. MT.	SQ. FT.
4 BHK	163.27	1757	18.14	195	181.41	1953

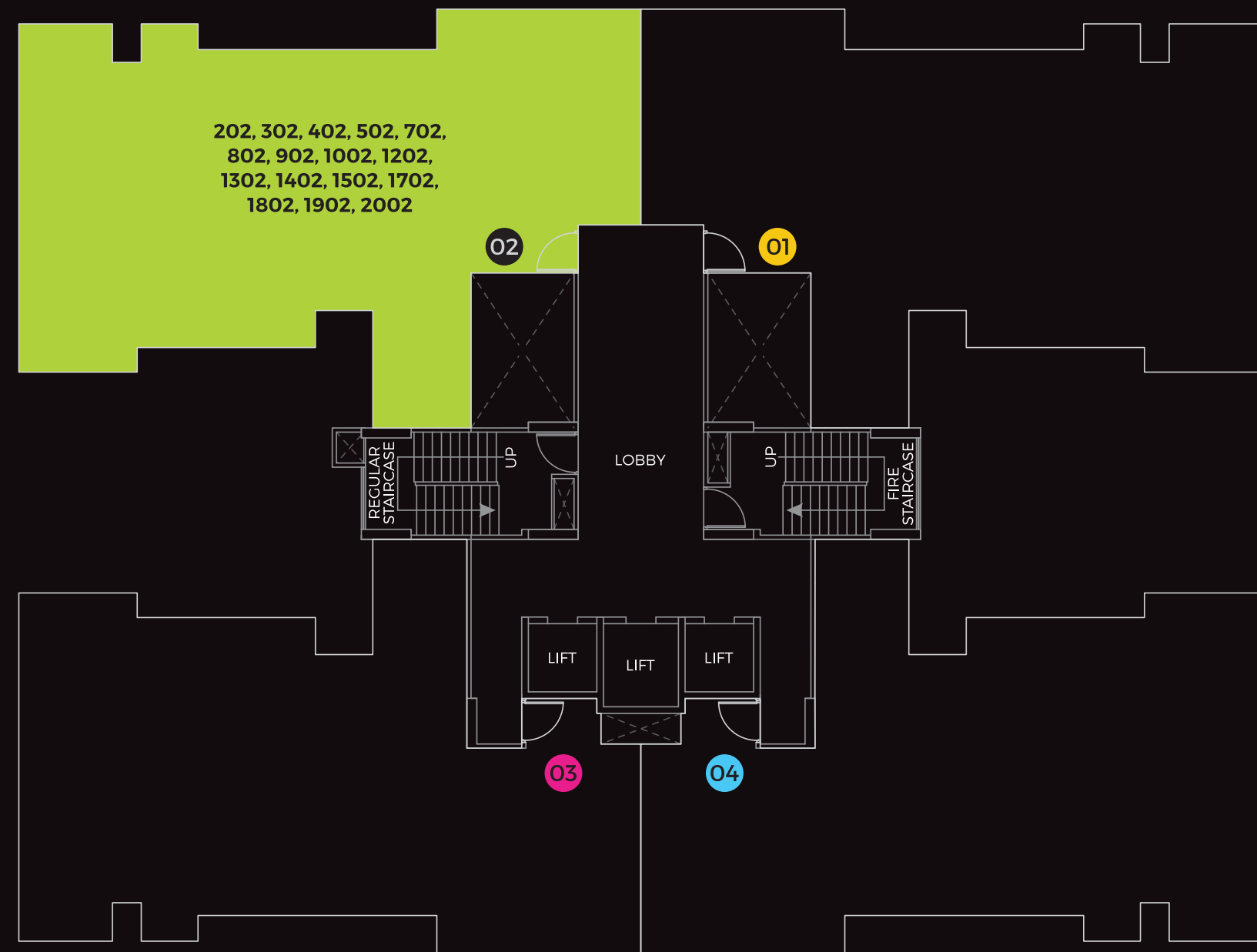
Wing K-1

Typical Floor

• All internal dimensions for carpet area are from unfinished wall surfaces. • In toilets, the carpet areas are inclusive of ledge walls (if any).  
• Minor variations up to (+/-) 3% in actual carpet areas may occur on account of site conditions/columns/finishes etc. • Conversion: 1 Sq. Mtr. = 10.764 Sq. Ft.

For internal circulation only.





# EN VOGUE<sup>TM</sup> UE

AVANT-GARDE RESIDENCES

*Master Plan*  
*Wing K-1* | *Typical*  
*Floor*



*Wing K-1*

---

*Typical Floor*

SERIES 2





**FLAT NO.**  
202, 302, 402, 502, 702, 802, 902, 1002, 1202,  
1302, 1402, 1502, 1702, 1802, 1902, 2002

AREA STATEMENT						
TYPE	RERA CARPET AREA		RERA BALCONY AREA		TOTAL AREA	
	SQ. MT.	SQ. FT.	SQ. MT.	SQ. FT.	SQ. MT.	SQ. FT.
4 BHK	163.27	1757	18.14	195	181.41	1953

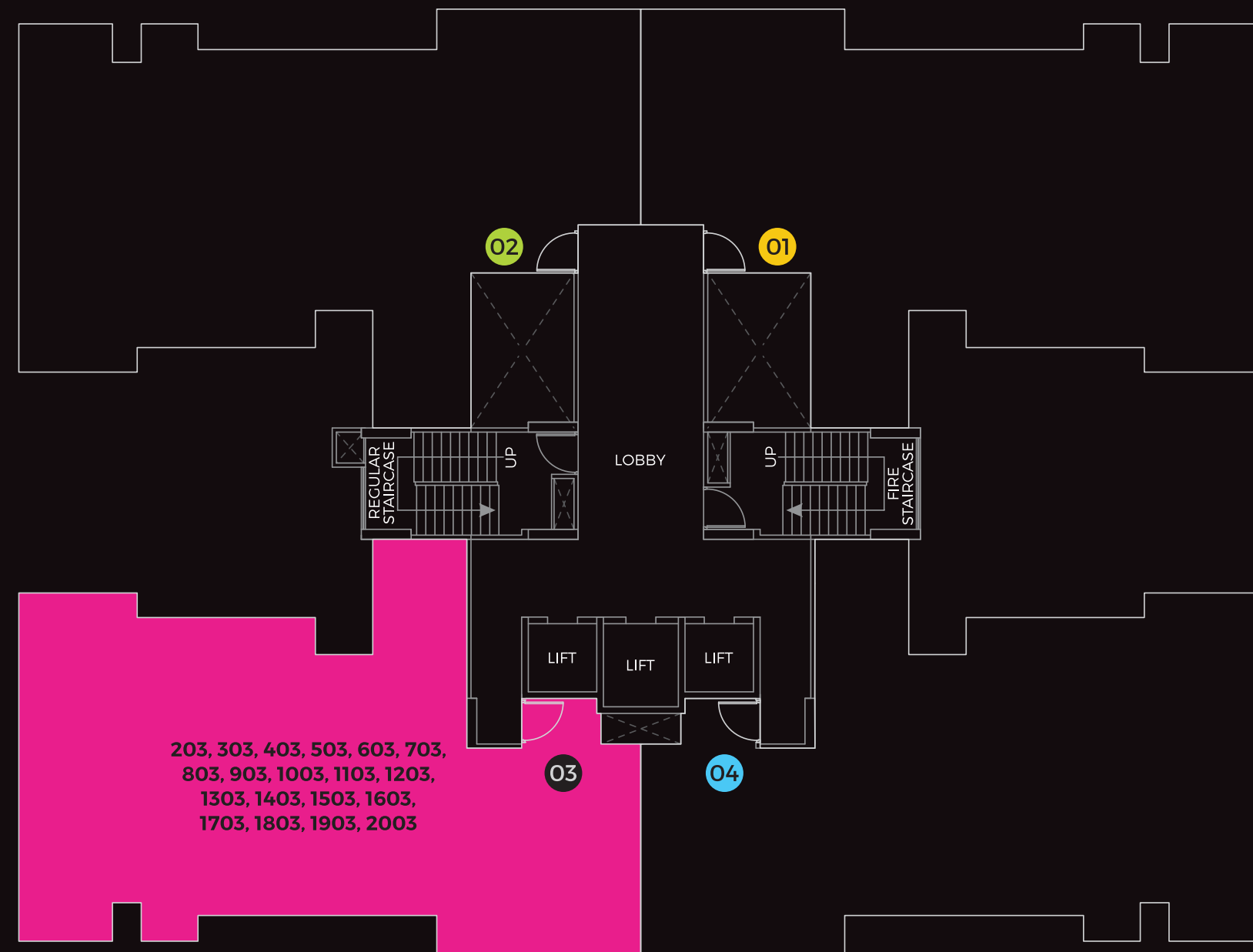
Wing K-1

Typical Floor

• All internal dimensions for carpet area are from unfinished wall surfaces. • In toilets, the carpet areas are inclusive of ledge walls (if any).  
• Minor variations up to (+/-) 3% in actual carpet areas may occur on account of site conditions/columns/finishes etc. • Conversion: 1 Sq. Mtr. = 10.764 Sq. Ft.

For internal circulation only.

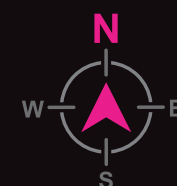




# En Vogue 1<sup>TM</sup>

AVANT-GARDE RESIDENCES

*Master Plan*  
*Wing K-1* | *Typical*  
*Floor*



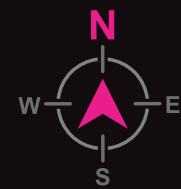
*Wing K-1*

---

*Typical Floor*

**SERIES 3**





**FLAT NO.**  
203, 303, 403, 503, 603, 703, 803, 903, 1003, 1103, 1203,  
1303, 1403, 1503, 1603, 1703, 1803, 1903, 2003

AREA STATEMENT						
TYPE	RERA CARPET AREA		RERA BALCONY AREA		TOTAL AREA	
	SQ. MT.	SQ. FT.	SQ. MT.	SQ. FT.	SQ. MT.	SQ. FT.
4 BHK	161.64	1740	18.14	195	179.78	1935

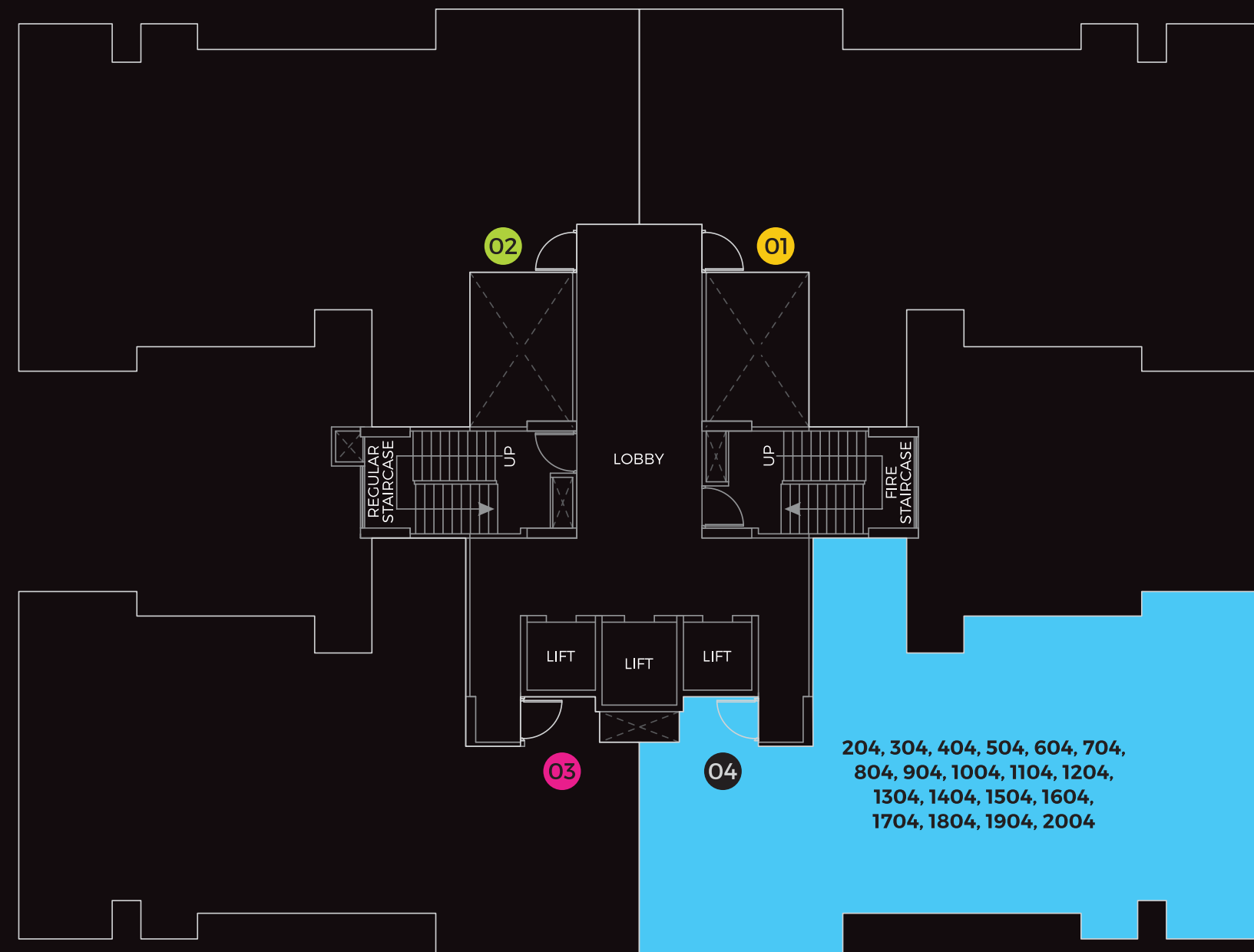
Wing K-1

Typical Floor

• All internal dimensions for carpet area are from unfinished wall surfaces. • In toilets, the carpet areas are inclusive of ledge walls (if any).  
• Minor variations up to (+/-) 3% in actual carpet areas may occur on account of site conditions/columns/finishes etc. • Conversion: 1 Sq. Mtr. = 10.764 Sq. Ft.

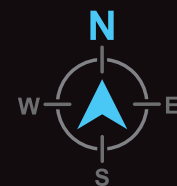
For internal circulation only.





**ENVUOGUE 1**<sup>TM</sup>  
Avant-garde Residences

*Master Plan*  
*Wing K-1* | *Typical*  
*Floor*



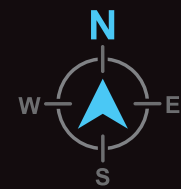
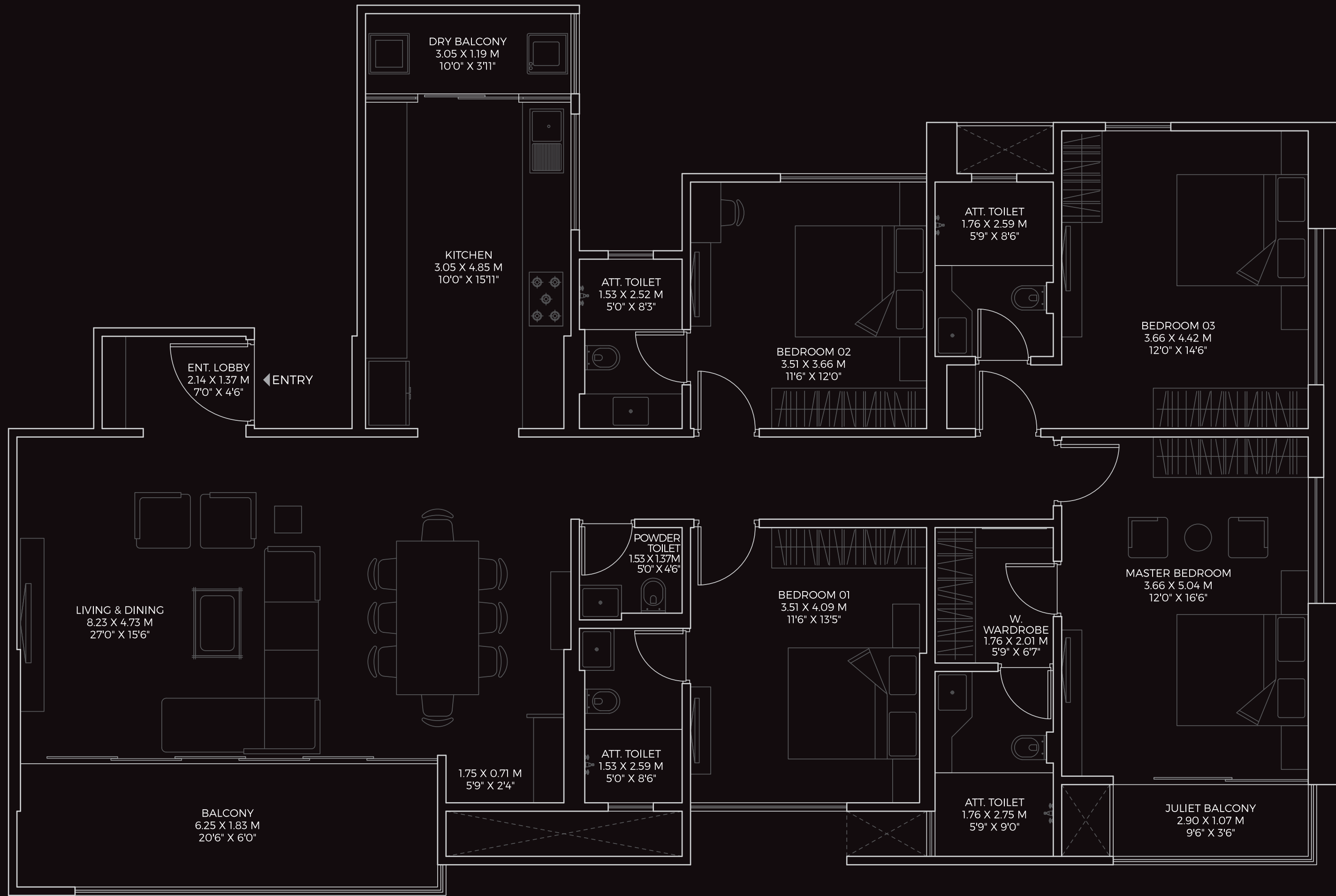
*Wing K-1*

---

*Typical Floor*

**SERIES 4**





**FLAT NO.**  
204, 304, 404, 504, 604, 704, 804, 904, 1004, 1104, 1204,  
1304, 1404, 1504, 1604, 1704, 1804, 1904, 2004

TYPE	RERA CARPET AREA		RERA BALCONY AREA		TOTAL AREA	
	SQ. MT.	SQ. FT.	SQ. MT.	SQ. FT.	SQ. MT.	SQ. FT.
4 BHK	161.64	1740	18.14	195	179.78	1935

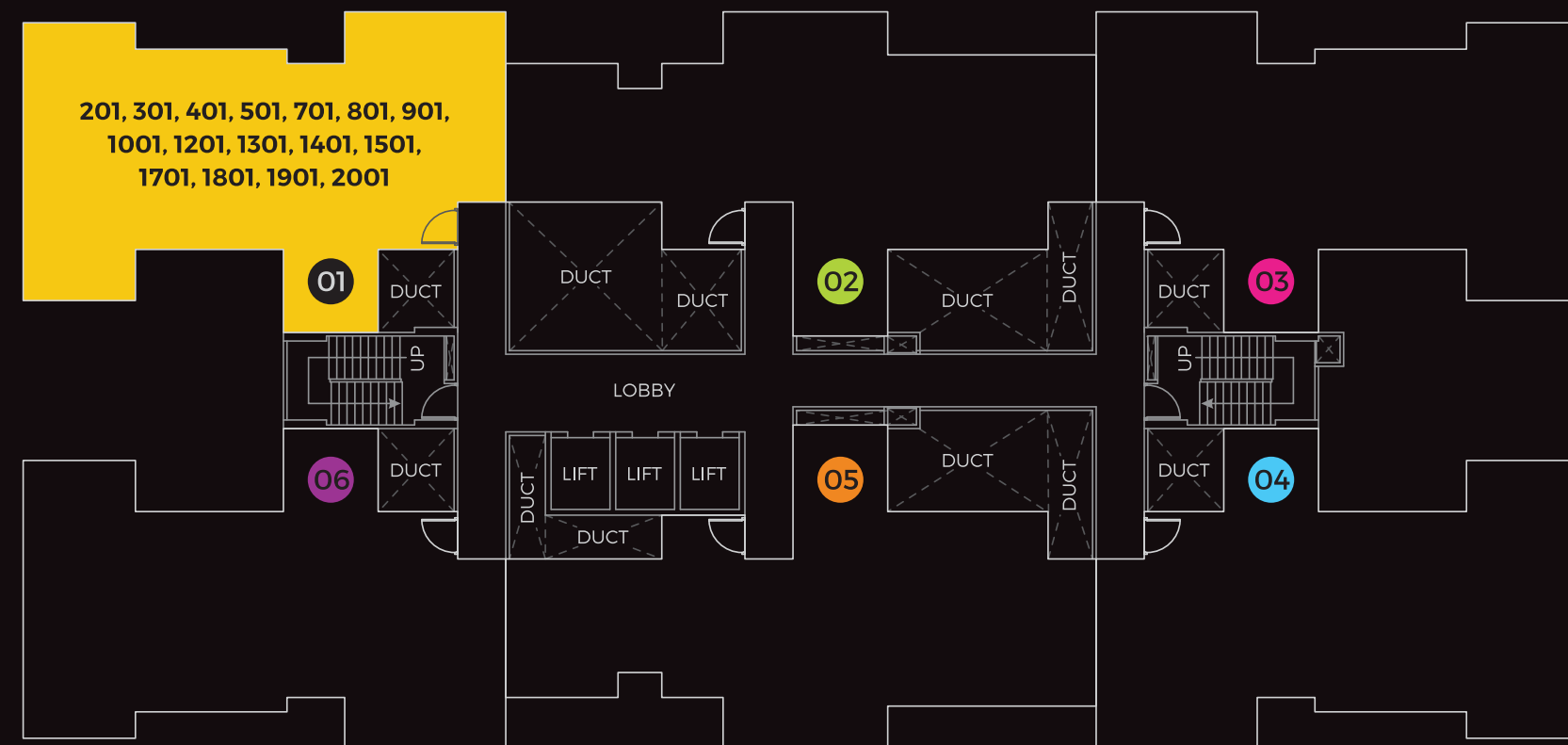
Wing K-1

Typical Floor

• All internal dimensions for carpet area are from unfinished wall surfaces. • In toilets, the carpet areas are inclusive of ledge walls (if any).  
• Minor variations up to (+/-) 3% in actual carpet areas may occur on account of site conditions/columns/finishes etc. • Conversion: 1 Sq. Mtr. = 10.764 Sq. Ft.

For internal circulation only.





# ENVUE I<sup>TM</sup>

Avant-garde Residences

*Master Plan*  
*Wing K-2* | *Typical*  
*Floor*



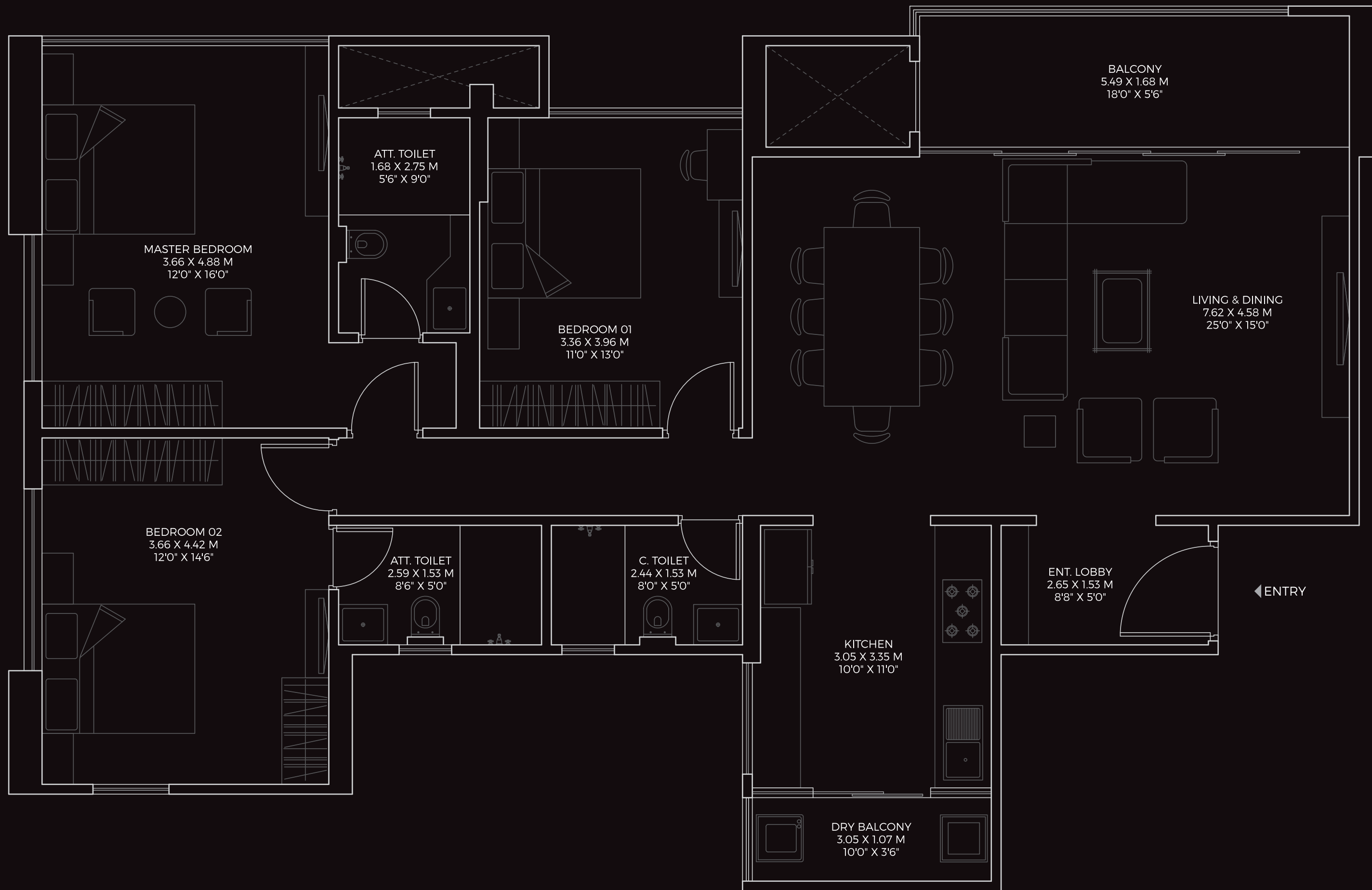
*Wing K-2*

---

*Typical Floor*

**SERIES 1**





**FLAT NO.**  
201, 301, 401, 501, 701, 801, 901, 1001, 1201,  
1301, 1401, 1501, 1701, 1801, 1901, 2001

TYPE	RERA CARPET AREA		RERA BALCONY AREA		TOTAL AREA	
	SQ. MT.	SQ. FT.	SQ. MT.	SQ. FT.	SQ. MT.	SQ. FT.
3 BHK TYPE 1	121.88	1312	12.44	134	134.32	1446

Wing K-2

Typical Floor

• All internal dimensions for carpet area are from unfinished wall surfaces. • In toilets, the carpet areas are inclusive of ledge walls (if any).  
• Minor variations up to (+/-) 3% in actual carpet areas may occur on account of site conditions/columns/finishes etc. • Conversion: 1 Sq. Mtr. = 10.764 Sq. Ft.

For internal circulation only.



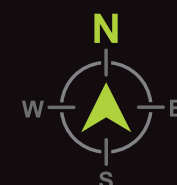


EN  
VOGUE™

AVANT-GARDE RESIDENCES

Master Plan  
Wing K-2

Typical  
Floor



Wing K-2

Typical Floor

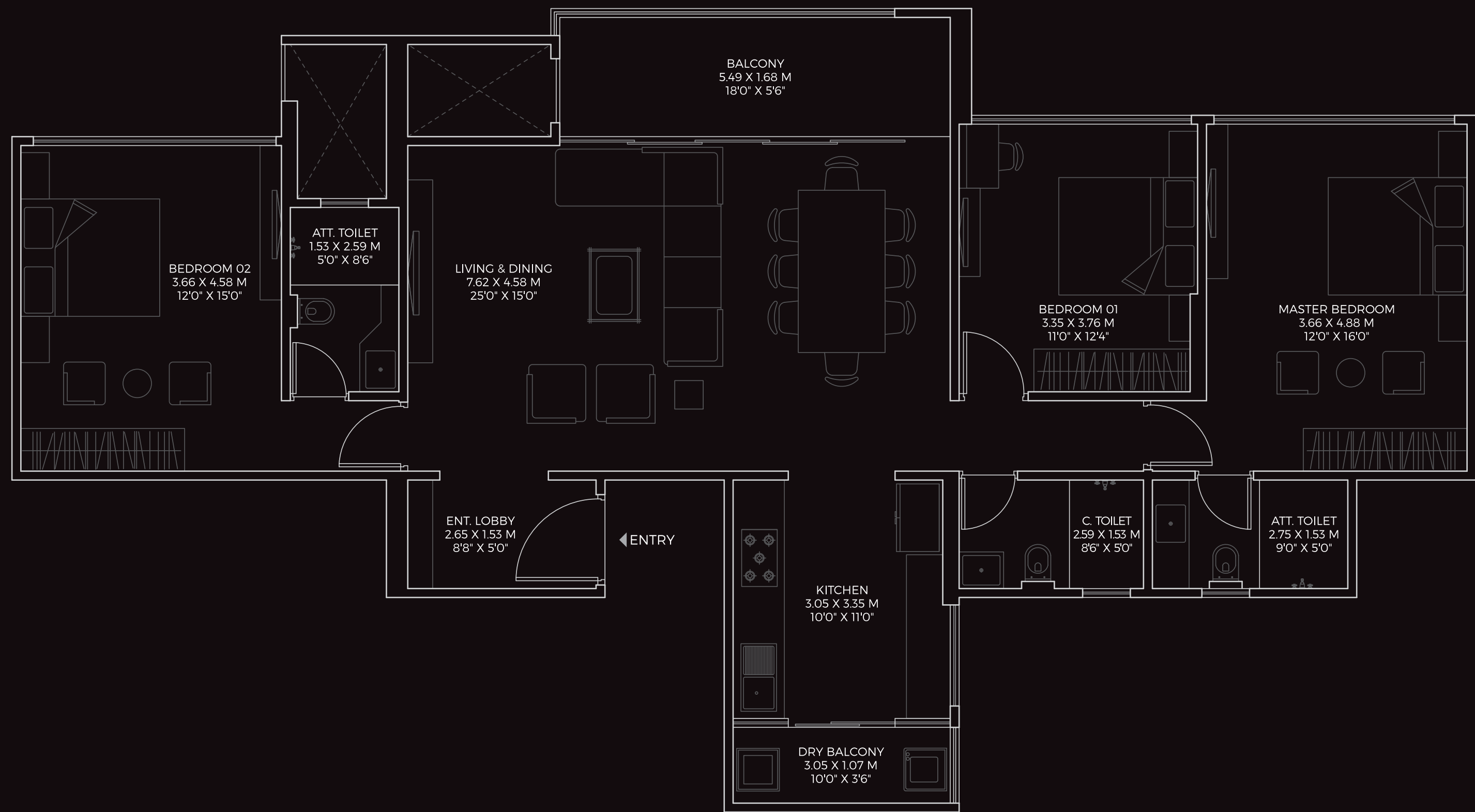
SERIES 2



Wing K-2

Typical Floor

• All internal dimensions for carpet area are from unfinished wall surfaces. • In toilets, the carpet areas are inclusive of ledge walls (if any).  
• Minor variations up to (+/-) 3% in actual carpet areas may occur on account of site conditions/columns/finishes etc. • Conversion: 1 Sq. Mtr. = 10.764 Sq. Ft.



**FLAT NO.**  
202, 302, 402, 502, 702, 802, 902, 1002, 1202,  
1302, 1402, 1502, 1702, 1802, 1902, 2002

TYPE	RERA CARPET AREA		RERA BALCONY AREA		TOTAL AREA	
	SQ. MT.	SQ. FT.	SQ. MT.	SQ. FT.	SQ. MT.	SQ. FT.
3 BHK TYPE 2	118.82	1279	12.44	134	131.26	1413

For internal circulation only.

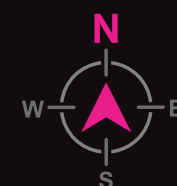




# En Vogue 1™

AVANT-GARDE RESIDENCES

*Master Plan*  
*Wing K-2* | *Typical*  
*Floor*



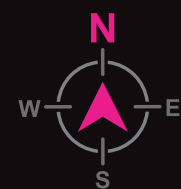
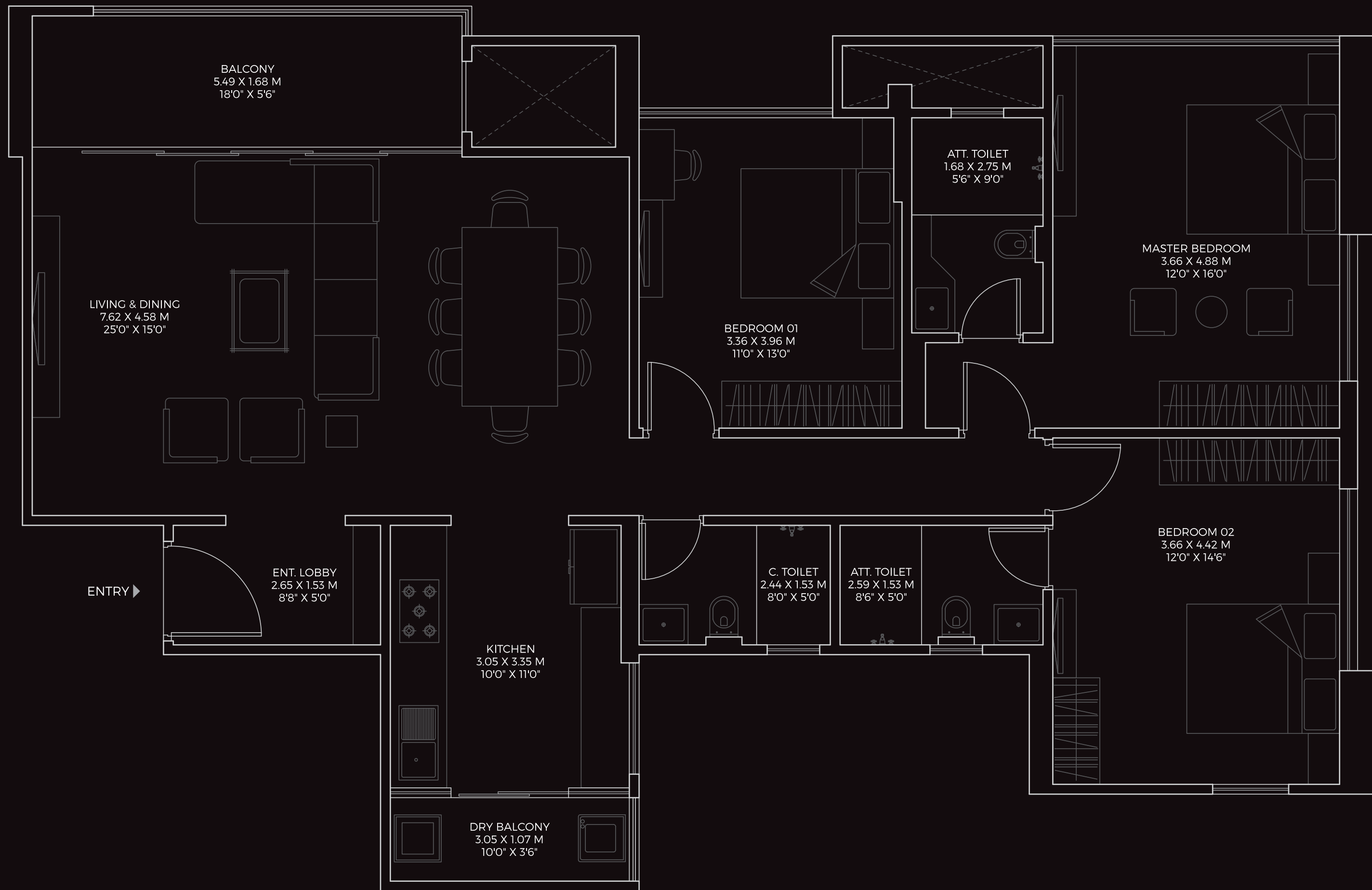
*Wing K-2*

---

*Typical Floor*

**SERIES 3**





**FLAT NO.**  
203, 303, 403, 503, 703, 803, 903, 1003, 1203,  
1303, 1403, 1503, 1703, 1803, 1903, 2003

TYPE	RERA CARPET AREA		RERA BALCONY AREA		TOTAL AREA	
	SQ. MT.	SQ. FT.	SQ. MT.	SQ. FT.	SQ. MT.	SQ. FT.
3 BHK TYPE 1	121.88	1312	12.44	134	134.32	1446

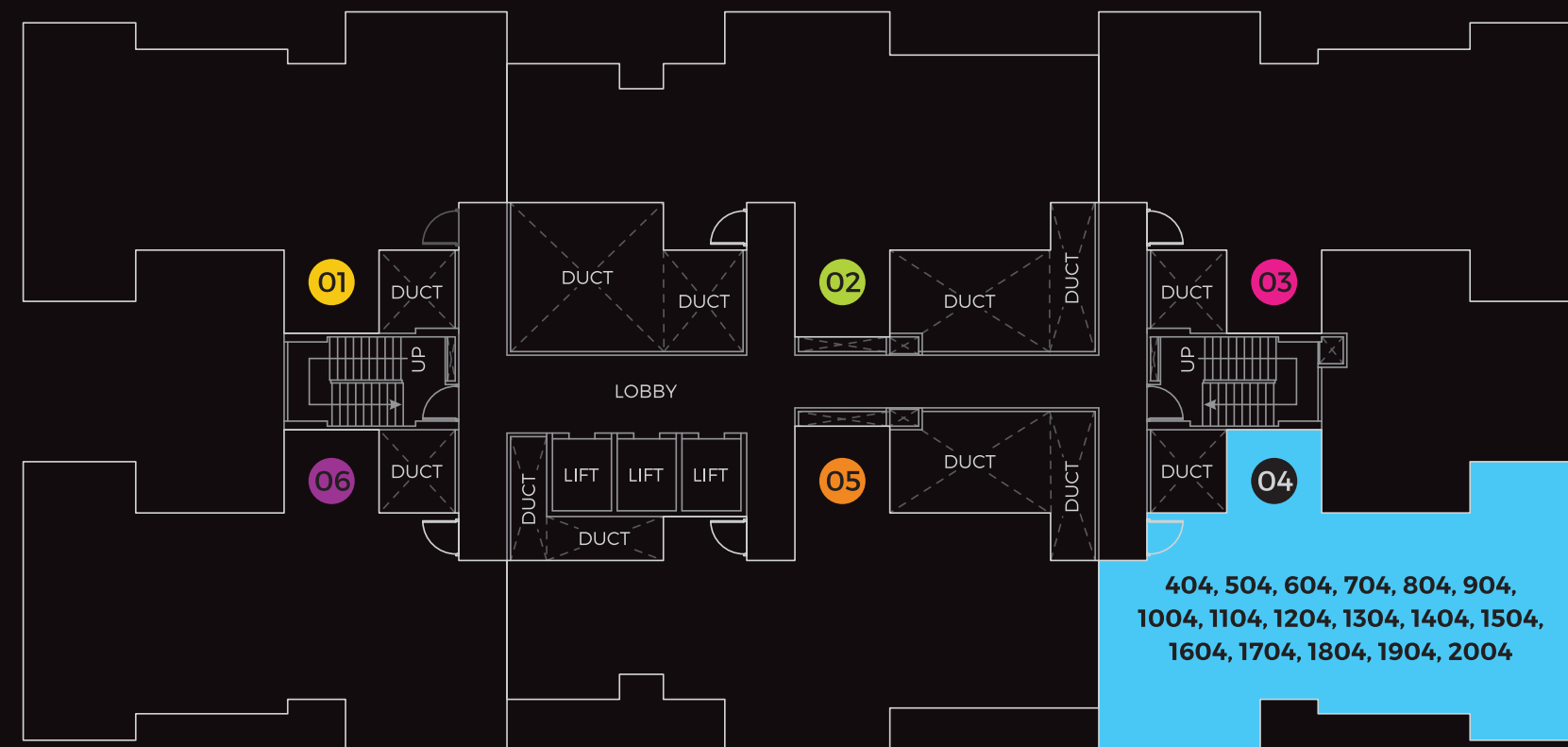
Wing K-2

Typical Floor

• All internal dimensions for carpet area are from unfinished wall surfaces. • In toilets, the carpet areas are inclusive of ledge walls (if any).  
• Minor variations up to (+/-) 3% in actual carpet areas may occur on account of site conditions/columns/finishes etc. • Conversion: 1 Sq. Mtr. = 10.764 Sq. Ft.

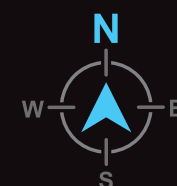
For internal circulation only.





Master Plan  
Wing K-2

Typical  
Floor



Wing K-2

Typical Floor

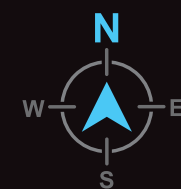
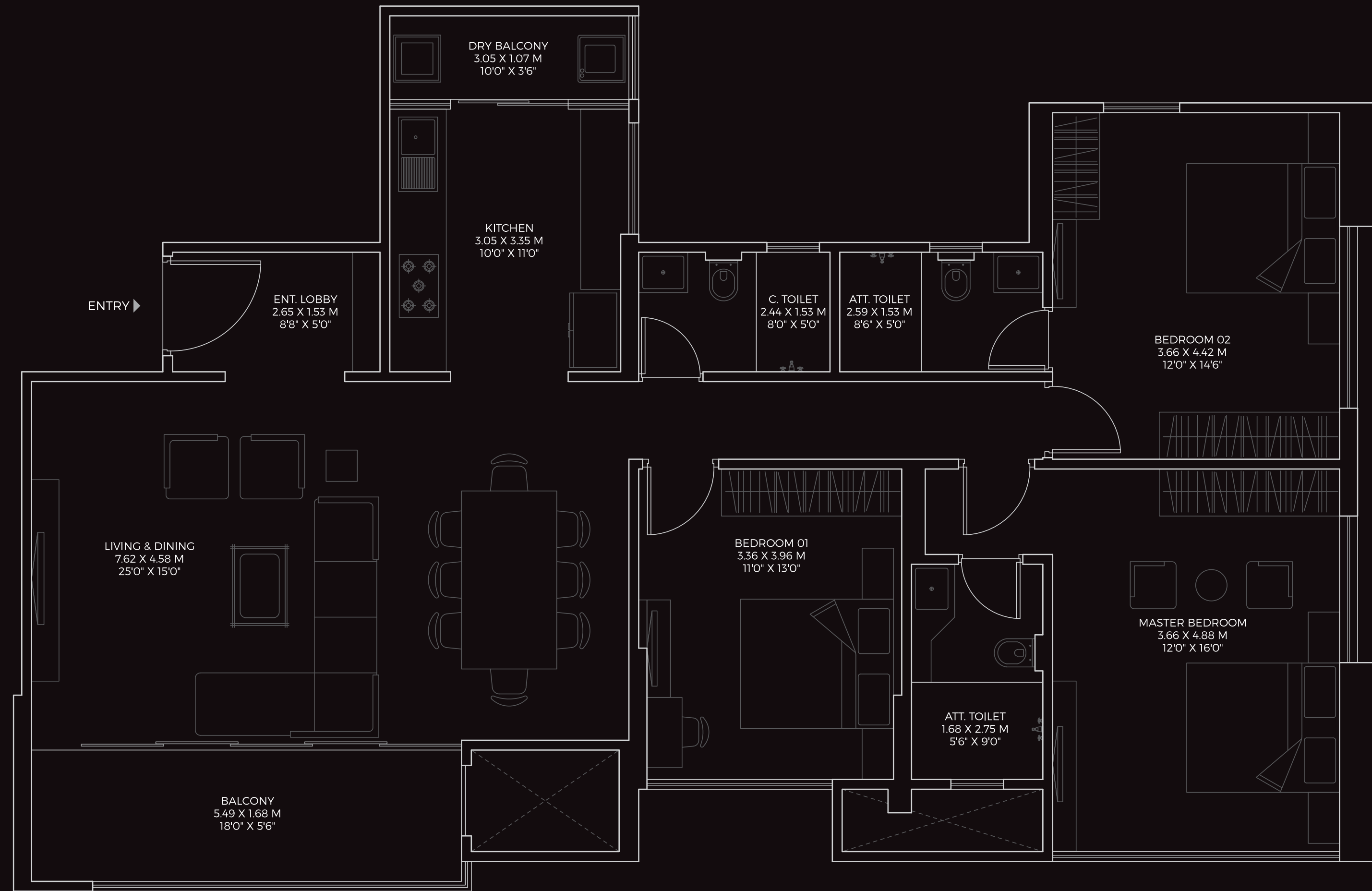
SERIES 4



Wing K-2

Typical Floor

• All internal dimensions for carpet area are from unfinished wall surfaces. • In toilets, the carpet areas are inclusive of ledge walls (if any).  
• Minor variations up to (+/-) 3% in actual carpet areas may occur on account of site conditions/columns/finishes etc. • Conversion: 1 Sq. Mtr. = 10.764 Sq. Ft.



**FLAT NO.**  
404, 504, 604, 704, 804, 904, 1004, 1104, 1204,  
1304, 1404, 1504, 1604, 1704, 1804, 1904, 2004

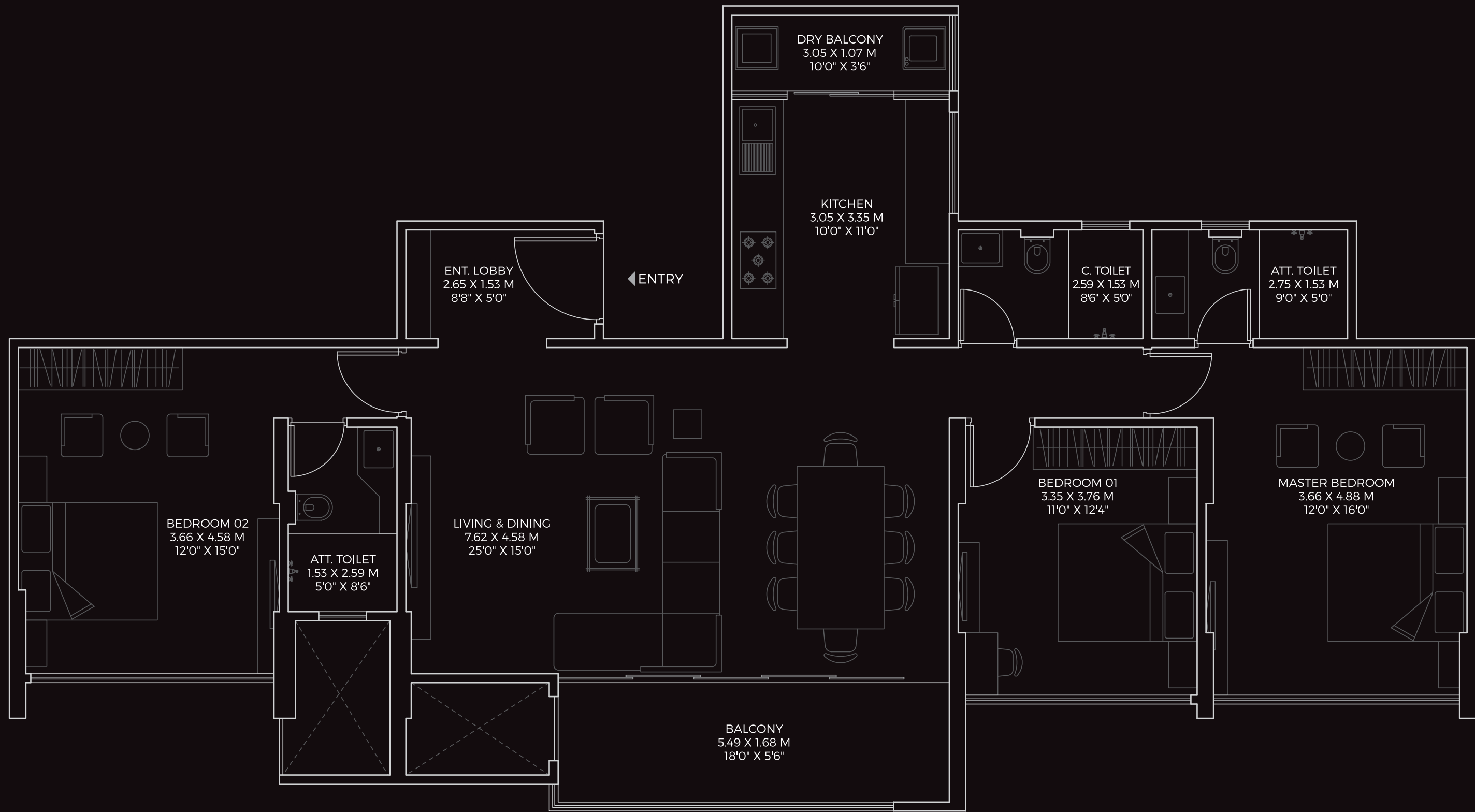
TYPE	RERA CARPET AREA		RERA BALCONY AREA		TOTAL AREA	
	SQ. MT.	SQ. FT.	SQ. MT.	SQ. FT.	SQ. MT.	SQ. FT.
3 BHK TYPE 1	121.88	1312	12.44	134	134.32	1446

For internal circulation only.









**FLAT NO.**  
405, 505, 605, 705, 805, 905, 1005, 1105, 1205,  
1305, 1405, 1505, 1605, 1705, 1805, 1905, 2005

**AREA STATEMENT**

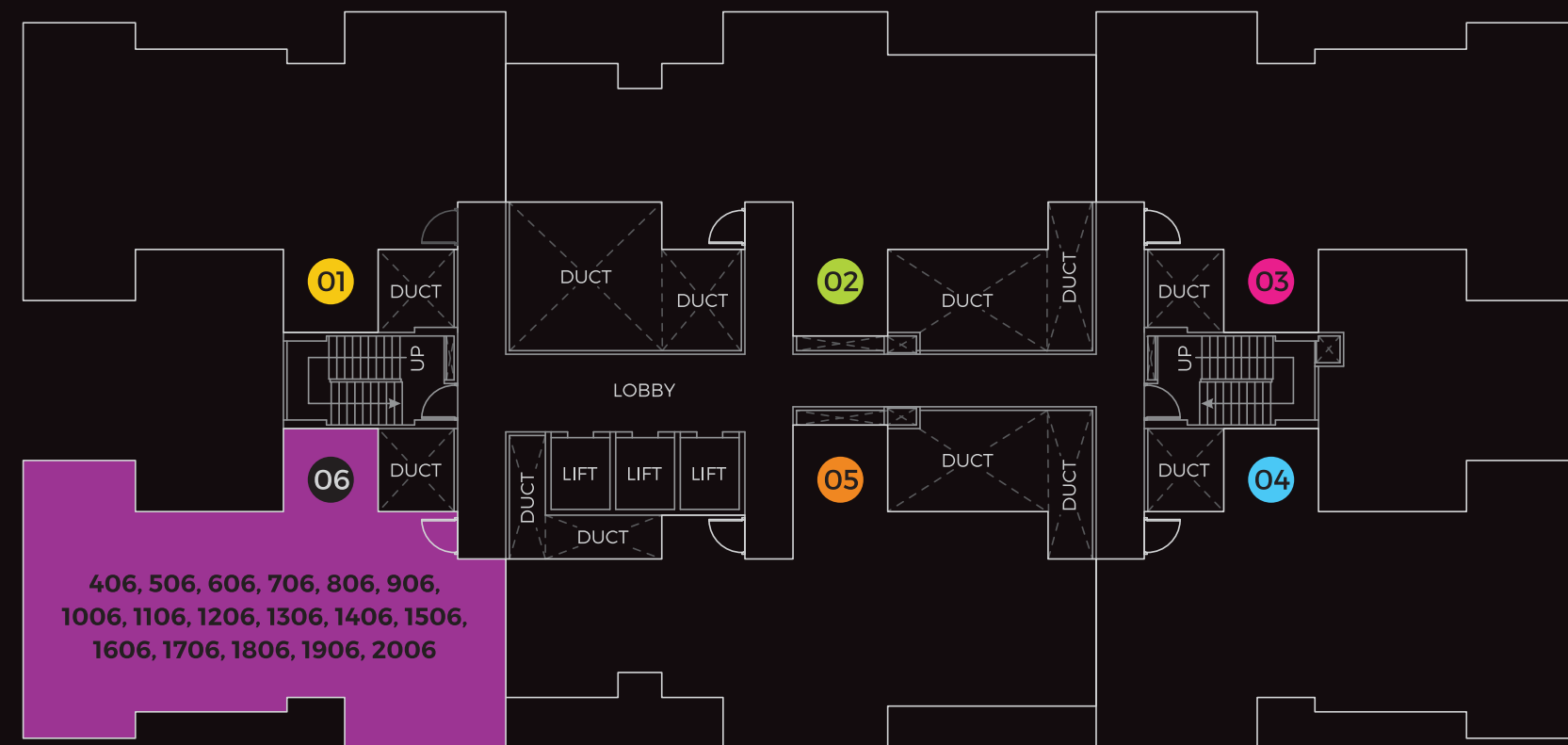
TYPE	RERA CARPET AREA		RERA BALCONY AREA		TOTAL AREA	
	SQ. MT.	SQ. FT.	SQ. MT.	SQ. FT.	SQ. MT.	SQ. FT.
3 BHK TYPE 2	118.82	1279	12.44	134	131.26	1413

**Wing K-2** | *Typical Floor*

• All internal dimensions for carpet area are from unfinished wall surfaces. • In toilets, the carpet areas are inclusive of ledge walls (if any).  
• Minor variations up to (+/-) 3% in actual carpet areas may occur on account of site conditions/columns/finishes etc. • Conversion: 1 Sq. Mtr. = 10.764 Sq. Ft.

For internal circulation only.



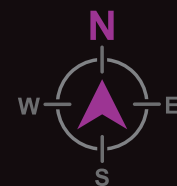


# EN VOGUE™

AVANT-GARDE RESIDENCES

Master Plan  
Wing K-2

Typical  
Floor



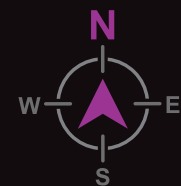
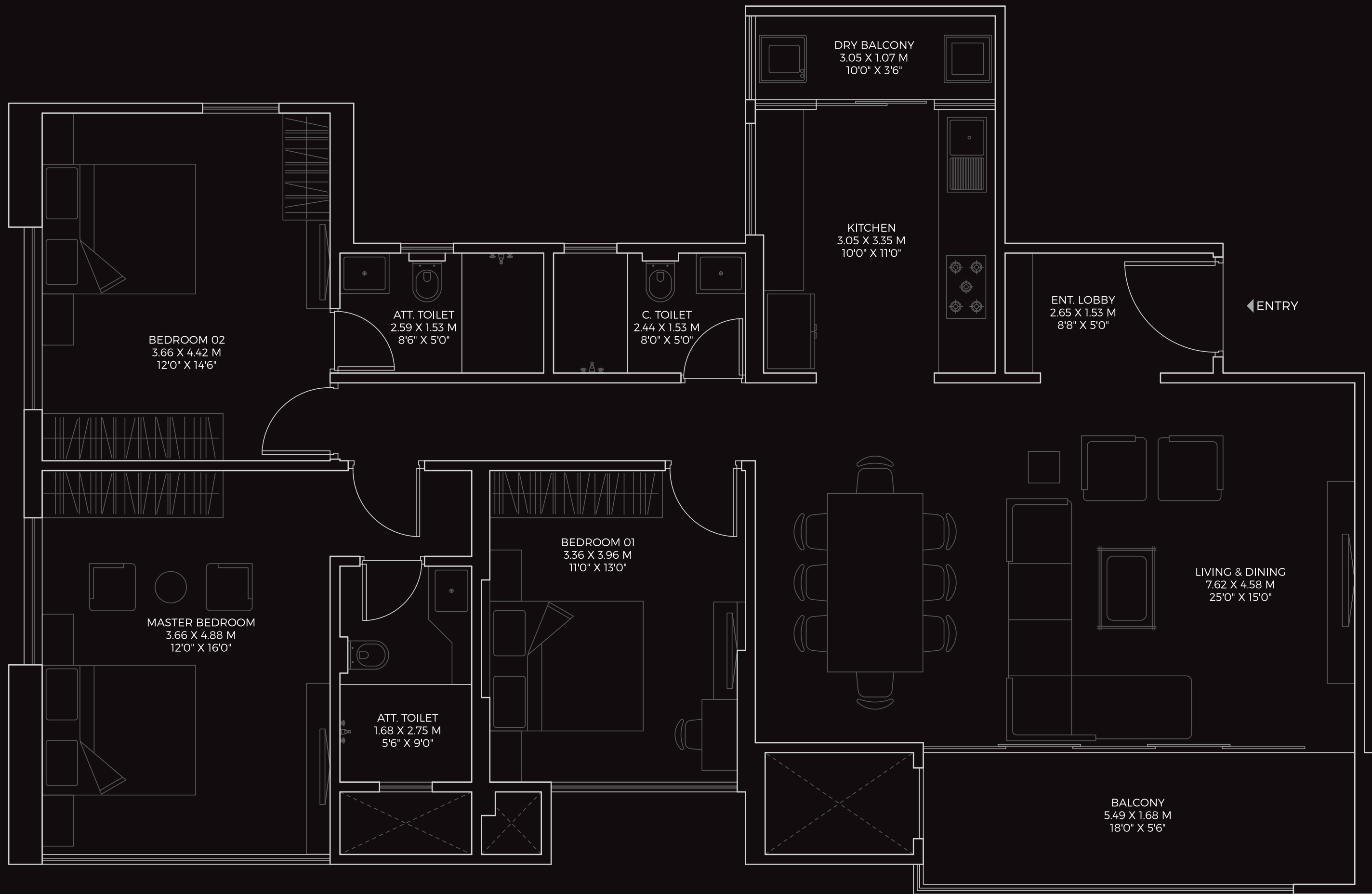
Wing K-2

---

Typical Floor

SERIES 6





**FLAT NO.**  
406, 506, 606, 706, 806, 906, 1006, 1106, 1206,  
1306, 1406, 1506, 1606, 1706, 1806, 1906, 2006

**AREA STATEMENT**

TYPE	RERA CARPET AREA		RERA BALCONY AREA		TOTAL AREA	
	SQ. MT.	SQ. FT.	SQ. MT.	SQ. FT.	SQ. MT.	SQ. FT.
3 BHK TYPE 1	121.88	1312	12.44	134	134.32	1446

**Wing K-2** | **Typical Floor**

- All internal dimensions for carpet area are from unfinished wall surfaces. • In toilets, the carpet areas are inclusive of ledge walls (if any).
- Minor variations up to (+/-) 3% in actual carpet areas may occur on account of site conditions/columns/finishes etc. • Conversion: 1 Sq. Mtr. = 10.764 Sq. Ft.

For internal circulation only.



## COMPLETED PROJECTS

- **K VILLE**, Kiwale
- **K TOWN PHASE** 1, 2 & 3, Kiwale
- **K CITY PHASE** 1 & 2, Keshavnagar
- **FLOW**, Kiwale
- **UNIQUE ZEST COUNTY**, Lohegaon
- **UNIQUE LIFESTYLE**, Wagholi
- **UNIQUE PROSPERO**, Lohegaon
- **AEROPOLIS**, Lohegaon
- **NIRMITI**, Lohegaon
- **ABHILASHA**, Lohegaon
- **PALLETE**, Ravet
- **SWAROOP ENCLAVE**, Parvati

## ONGOING PROJECTS



All images are artistic impressions





CREDITS

ARCHITECT & LANDSCAPE DESIGNER  
Space Craft Associates

LIASIONING ARCHITECT  
Hirak Shah

MEP CONSULTANT  
Skyline Consultants

RCC CONSULTANT  
Subhash Tayal

LEGAL ADVISOR  
Adv. Sanjay Agarwal

3D & BRANDING CONSULTANT  
Square One



SITE ADDRESS

S. No. 56, Hissa No. 3B, Deccan Paper Mill Road, Mundhwa, Pune, Maharashtra – 411036

7030775533 | www.tayalcorp.com | salesenvogue1@tayalcorp.com

PROJECT BY



Discover Ongoing  
Projects



Explore Completed  
Projects



1. The contents including designs, layouts, amenities, facilities, images displayed/provided, are solely for information purposes and are not intended to constitute a solicitation. It is an artistic impression/schematic representation of the project shown and is indicative of the project that can be built. This material does not constitute a contract of any type between the developer/promoter/owner and the recipient. Nothing should be construed to be final. Since the project is under evolution, there is a possibility that there may be certain changes in the project as represented in promotional material. Every interested buyer is required to verify all the details independently prior to concluding any decision of buying any unit. The developers are not responsible for the consequences of any action taken by the viewer relying on such information/material. Terms and conditions apply.

2. No person is authorized to use this brochure for any purpose without written permission from Unique Spaces Landmarks LLP. Unique Spaces Landmarks LLP reserves full rights to take any legal action.



STAY  
UN  
APO  
LO  
GIC  
TIC.



Evogue 1<sup>TM</sup>